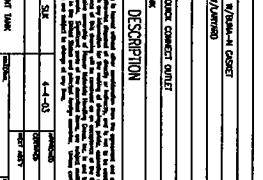
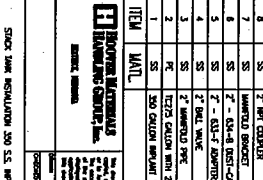
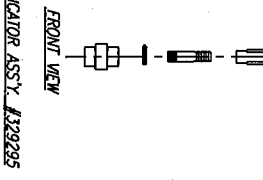
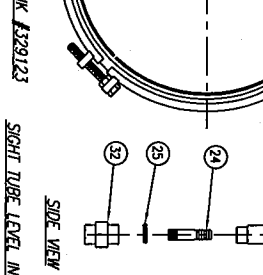
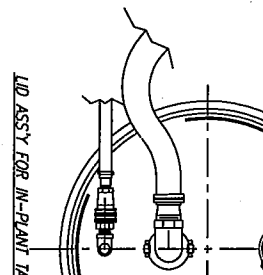
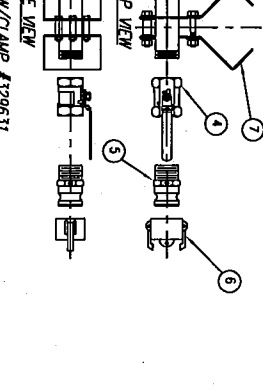
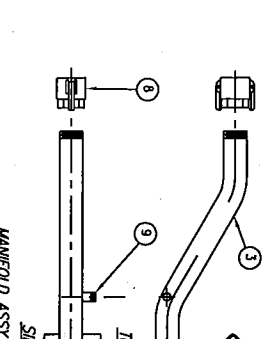
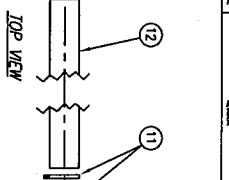
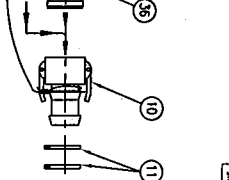
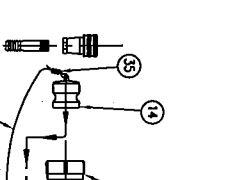
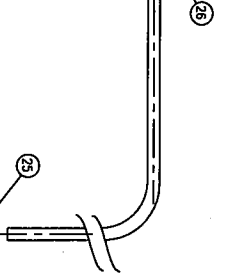
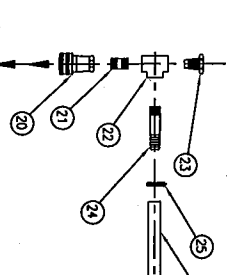


LENGTH OF COMPONENTS

ITEM NO.	DESCRIPTION	LENGTH (IN.)	QTY.
15	1/2" DIA. PIPE	30"	1
16	1/2" DIA. PIPE	30"	1
17	1/2" DIA. PIPE	30"	1
18	1/2" DIA. PIPE	30"	1
19	1/2" DIA. PIPE	30"	1
20	1/2" DIA. PIPE	30"	1
21	1/2" DIA. PIPE	30"	1
22	1/2" DIA. PIPE	30"	1
23	1/2" DIA. PIPE	30"	1
24	1/2" DIA. PIPE	30"	1
25	1/2" DIA. PIPE	30"	1
26	1/2" DIA. PIPE	30"	1
27	1/2" DIA. PIPE	30"	1
28	1/2" DIA. PIPE	30"	1
29	1/2" DIA. PIPE	30"	1
30	1/2" DIA. PIPE	30"	1
31	1/2" DIA. PIPE	30"	1
32	1/2" DIA. PIPE	30"	1
33	1/2" DIA. PIPE	30"	1
34	1/2" DIA. PIPE	30"	1
35	1/2" DIA. PIPE	30"	1



© HOOPER MATERIALS HANDLING GROUP, INC., 2003

ITEM NO.	DESCRIPTION	QTY.	PART NO.
1	1/2" DIA. PIPE	1	31112
2	1/2" DIA. PIPE	1	31113
3	1/2" DIA. PIPE	1	31114
4	1/2" DIA. PIPE	1	31115
5	1/2" DIA. PIPE	1	31116
6	1/2" DIA. PIPE	1	31117
7	1/2" DIA. PIPE	1	31118
8	1/2" DIA. PIPE	1	31119
9	1/2" DIA. PIPE	1	31120
10	1/2" DIA. PIPE	1	31121
11	1/2" DIA. PIPE	1	31122
12	1/2" DIA. PIPE	1	31123
13	1/2" DIA. PIPE	1	31124
14	1/2" DIA. PIPE	1	31125
15	1/2" DIA. PIPE	1	31126
16	1/2" DIA. PIPE	1	31127
17	1/2" DIA. PIPE	1	31128
18	1/2" DIA. PIPE	1	31129
19	1/2" DIA. PIPE	1	31130
20	1/2" DIA. PIPE	1	31131
21	1/2" DIA. PIPE	1	31132
22	1/2" DIA. PIPE	1	31133
23	1/2" DIA. PIPE	1	31134
24	1/2" DIA. PIPE	1	31135
25	1/2" DIA. PIPE	1	31136
26	1/2" DIA. PIPE	1	31137
27	1/2" DIA. PIPE	1	31138
28	1/2" DIA. PIPE	1	31139
29	1/2" DIA. PIPE	1	31140
30	1/2" DIA. PIPE	1	31141
31	1/2" DIA. PIPE	1	31142
32	1/2" DIA. PIPE	1	31143
33	1/2" DIA. PIPE	1	31144
34	1/2" DIA. PIPE	1	31145
35	1/2" DIA. PIPE	1	31146

STAIN STEEL MANUFACTURING CO. S.S. W/PLANT TANK

MANIFOLD ASST. W/CLAMP #329631

LID ASST. FOR IN-PLANT TANK #329123

SIGHT TUBE LEVEL INDICATOR ASST. #329295

LIQUID TRANSFER HOSE #220131

VAPOR RETURN LINE ASST. #329283

VAPOR RETURN BUNG ASST. #329282

SIGHT TUBE GAUGE SS

302858